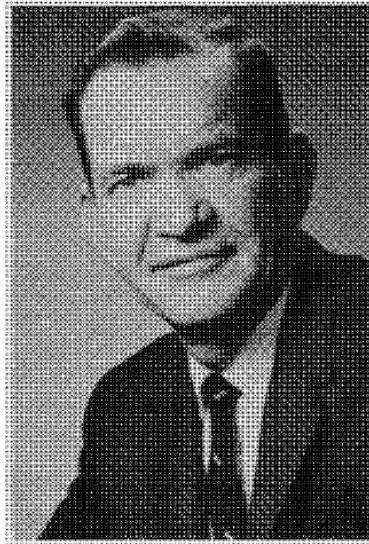


From the Oat Newsletter, volume 30, 1979:

John E. Grafius
In Memory



John E. Grafius was born June 8, 1916 in Rochester, New York. He received his B.S. degree from Michigan State University and his M.S. and Ph.D. degrees from Iowa State University. After receiving the Ph.D. in 1942, he joined the staff at South Dakota State University, then moved to Michigan State University in 1953, where he served as Professor of Farm Crops until his retirement. He died January 19, 1980 after a short illness.

Dr. Grafius was a leader in research on small grains and in the development of improved small grain varieties. His oat varieties include James, a hulless type, Coachman, Menominee, Au Sable, Mariner, Korwood, and Mackinaw. He developed varieties of barley, winter wheat, and rye as well.

Dr. Grafius authored more than 60 technical articles in plant breeding and related subjects, and is perhaps best known for his monograph entitled "A Geometry of Plant Breeding" which describes his philosophy and strategy of plant breeding. He was instrumental in applying mathematics to many breeding problems. Also, he made significant contributions in development of plot equipment, namely a mechanical plot seeder and a self-propelled plot combine.

He was an excellent teacher, teaching both statistics and advanced plant breeding. During his career he advised a number of graduate students, both domestic and international.

He is a past Crop Science Achievement Award winner, a Guggenheim fellow and a Fellow in ASA. He was given the Award for Distinguished Service to Oat Improvement

in 1978, and was given a Distinguished Faculty Award at Michigan State University just before his death. He is a member of Phi Kappa Phi, Sigma Xi, Alpha Zeta and the American Society of Agronomy and Crop Science Society of America. He has been active in university activities including service on the Academic Council of Michigan State University.